


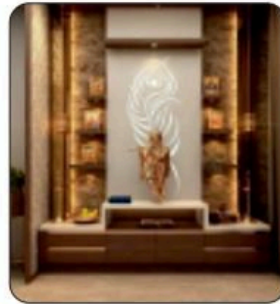


NATURE  
VILLAS

 Sector-1, Village Bisrakh,  
Near ATS Gol Chakkar, Noida Extension

# NATURE VILLAS

Nature Villas brings a new era of luxury living which is well connected to all important destination. An ideal base from where you can set out on new journey into the world of your own. The project is a unique development hosting artfully thought out living spaces juxtaposed against minimalist architectural philosophy for a holistic living experience that is truly inspiring.



Nature villas are located in the prime location of Noida Extension. These residential villas have excellent connectivity, medical facility, shopping centre and school. It has been carefully designed allow superior ventilation and spectacular landscape.

## SPECIAL FEATURE

- Gated Society
- 25 Feet Wide Roads
- Street Lights
- CCTV Cameras
- Security Guard- 24x7
- Commercial Complex in the Society
- Gym
- Club
- Sewer Line
- Vaastu Friendly Layout



## DUPLEX VILLA

Villa Plot Size 65 sqyd  
1400 Sqft (Covered Area)

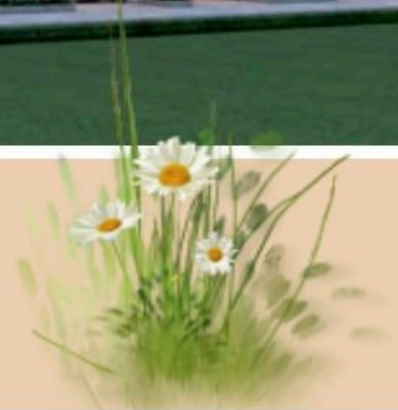
3 BHK with 3 Toilet

Covered Car Parking

Semi Furnished

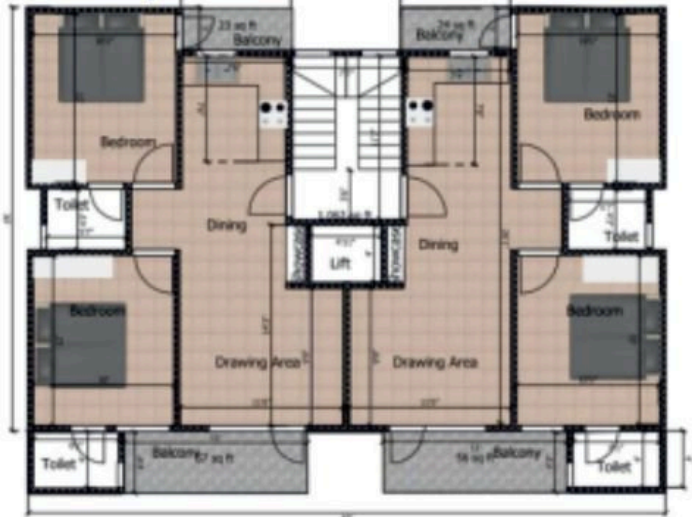


Nature villa 2bhk & 3 BHK is one of the most spacious products available in Noida extension. 2 & 3 bhk comes in the low-rise configurations with covered car parking and roof club. Project amenities aside, these 2 & 3 bedroom apartments alone make Nature villa one of the most desired products because these apartments are spacious and well planned.





**2BHK 800sqft**



**3BHK 1050sqft**

**AMENITIES**



DUAL BOARING  
24X7 WATER SUPPLY



WALL TILES  
(KITCHEN)



ALUMINUM  
COATED WINDOW



PREMIUM  
QUALITY DOOR



AUTOMATED  
LIFT



CCTV CAMERA  
24X7 SECURITY



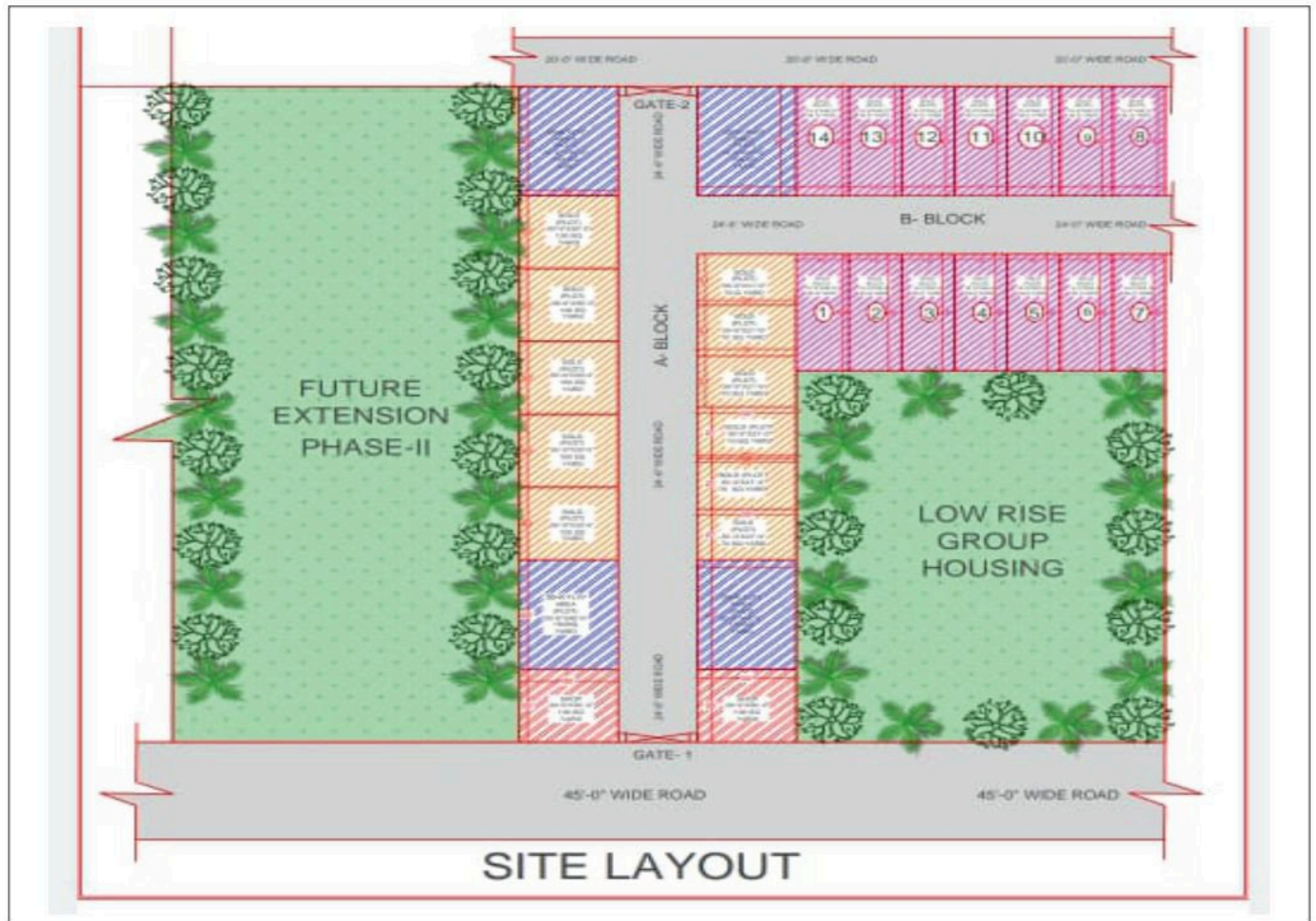
PARKING SPACE



POWER BACKUP  
24X7 ELECTRICITY



INTERCOM



**SITE LAYOUT**

# SPECIFICATION

## STRUCTURE:

- ⊙ Earthquake resistant RCC frame structure.
- ⊙ External Finish - Combination of long lasting paint.

## DRAWING & DINING ROOM:

- ⊙ Floor vitrified Tiles.
- ⊙ Walls plastered & painted with pleasing shades of OBD.
- ⊙ Ceiling plastered & painted with pleasing shades of OBD.

## KITCHEN

- ⊙ Floor Vitrified tiles.
- ⊙ Walls ceramic Glazed Tiles up to 2 feet height above counter.
- ⊙ Ceiling plastered & painted with pleasing shades of OBD.
- ⊙ Platform per-polished granite platform with stainless steel sink.

## MASTER BEDROOM

- ⊙ Floor vitrified Tiles.
- ⊙ Walls plastered & painted with pleasing shades of OBD.
- ⊙ Ceiling plastered & painted with pleasing shades of OBD.

## OTHER BEDROOM

- ⊙ Floor vitrified Tiles.
- ⊙ Walls plastered & painted with pleasing shades of OBD.
- ⊙ Ceiling plastered & painted with pleasing shades of OBD.

## BALCONIES

- ⊙ Floor Anti Skid Ceramic Tiles.

## TOILETS

- ⊙ Floor Anti Skid Ceramic Tiles.
- ⊙ Walls ceramic tiles up to door level or 7 feet.
- ⊙ Fittings/Fixtures all types chrome plated ISI Mark, wash basin & W.C. in all toilets with provision for Hot & Cold water system.

## DOORS & WINDOWS

- ⊙ Entrance door seasoned hardwood frame,
- ⊙ Hardwood shutter with panelling of designer duly laminated.
- ⊙ Internal Doors Flush door shutter duly laminate.
- ⊙ External Doors & windows of flush door with stain paint.

## STAIRCASE

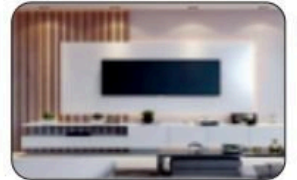
- ⊙ Floor combination of green & white marble.
- ⊙ Walls plastered & painted with pleasing shades of OBD.
- ⊙ Ceiling plastered & painted with pleasing shades of OBD.

## ELECTRICAL

- ⊙ Copper concealed wires in all Bedrooms/Drawing/Dining, toilets & Kitchen.
- ⊙ Switches / sockets modular in all the bedrooms/drawing/dining, toilets & kitchen.
- ⊙ Intercom /TV facility & provisions for DTH connection.

## EXTRA SPECIFICATION

- ⊙ Wall texture in bedrooms.
- ⊙ Lift.





## Near to the NATURE VALLY

- ⊙ 76 metro station 5km
- ⊙ Crossing republic NH24 10km
- ⊙ Sector 121 noida 8km
- ⊙ Noida city center 13km
- ⊙ Yatharth hospital 1km
- ⊙ Gaur City Mall 3km
- ⊙ DPS public school 2km
- ⊙ Ghaziabad railway station 15km
- ⊙ Shopping Complex, Nursery School, Religious Place
- ⊙ Nursing Hoes, Petrol Pump in close vicinity



# NATURE VILLAS

Sector-1, Village Bisrakh, Near ATS Gol Chakkar, Noida Extension